

SPECIFICATIONS:

- HDPE tank and durable coated steel frame up to 400 kg (880 lbs) load capacity
- 2"x4" In Wall Carrier System
- Insulated tank to prevent condensation
- 6.0 Lpf / 1.6 gpf or 3.0 Lpf / 0.8 gpf
- Chrome and white finish dual flush button
- Vitreous china bowl
- Wash down flush action
- Adjustable carrier height to range 16" (405mm) to 17" (430mm) bowl rim height
- Smooth close and quick removal seat with scratch resistant and anti-uv features
- 3" pvc waste outlet included
- Water surface: 4³/₄" x 4" (120mm x 100mm)
- 100% factory flush tested

OVERALL DIMENSIONS:

Tank Carrier

590mm (W) x 90mm (D) x 1130mm to 1260mm (H)
23¹/₄" (W) x 3¹/₂" (D) x 44³/₈" to 49⁵/₈" (H)

Wall Hung Bowl

352mm (W) x 510mm (D) x 362mm (H)
13⁷/₈" (W) x 20" (D) x 14¹/₄" (H)

SHIPPING:

Cube 3.8 (Carrier) / 2.25 (Bowl)
GW 39 lbs (Carrier) / 45 lbs (Bowl)

COMPLIANCE CERTIFICATIONS:

Meets or exceeds the following specs:

- IAPMO cUPC
- ASME A112.19.2 / CSA B45.1
- ASME A112.6.2
- CSA B125.3 / ASME A112.6.2
- US EPA WaterSense
- MaP Tested 600g



ITEM TO BE SPECIFIED:

TANK CARRIER & BOWL KIT WITH WHITE PUSH BUTTON

CTL-1031DF-W
UPC: 721015430032

TANK CARRIER & BOWL KIT WITH CHROME PUSH BUTTON

CTL-1031DF-C
UPC: 721015430049

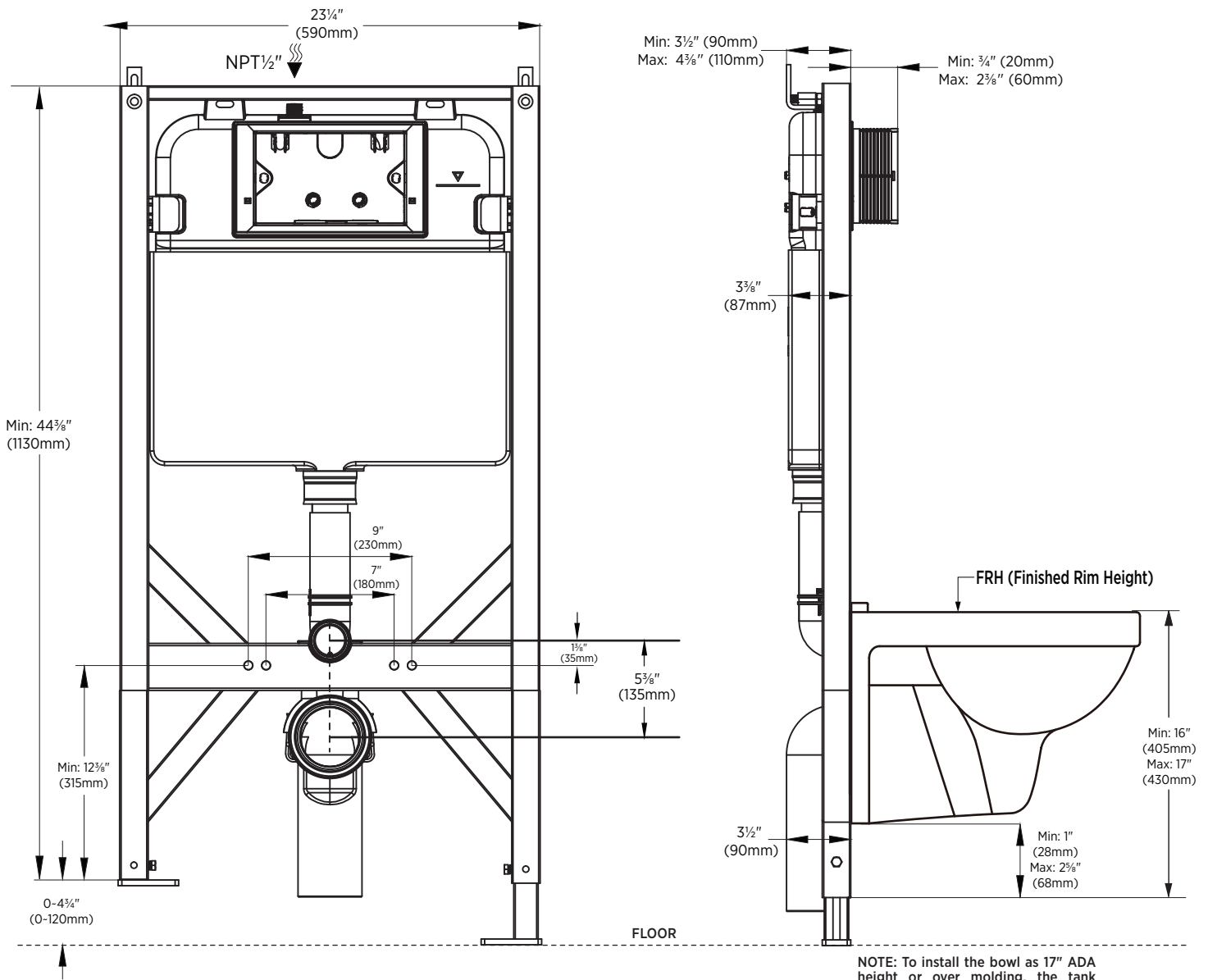
TANK CARRIER & BOWL KIT INCLUDES:

CT-1031DF - Tank Carrier
LL-1041-W - Wall Hung Bowl
FB-110C - Chrome Push Button
FB-110W - White Push Button

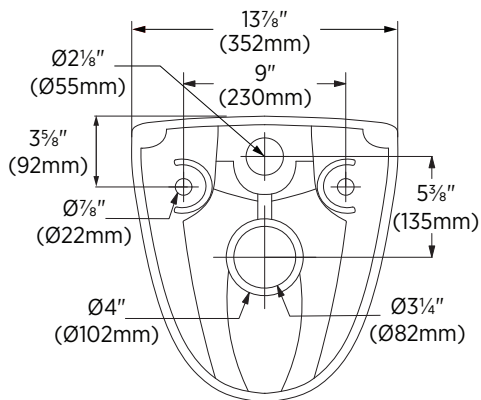
***PLEASE SEE SPEC DRAWING ON REVERSE SIDE**

Notes:

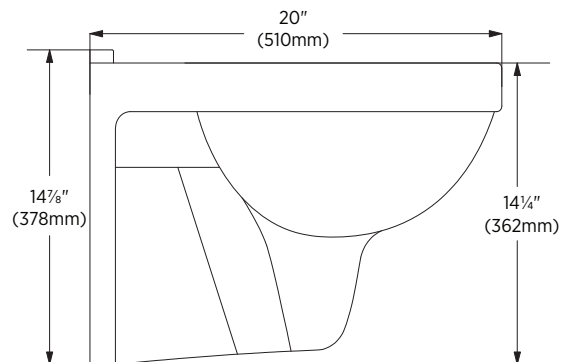
Important: Dimensions of product are nominal and may vary within the range of tolerances allowed. These measurements are subject to change or cancellation. No responsibility is assumed for use of superseded or voided pages.



NOTE: To install the bowl as 17" ADA height or over molding, the tank carrier leg needs to be adjusted by extending it 27mm (1") longer.



Back of toilet bowl



Notes:

Important: Dimensions of product are nominal and may vary within the range of tolerances allowed. These measurements are subject to change or cancellation. No responsibility is assumed for use of superseded or voided pages.