

SPECIFICATIONS

- Rustic grey finish
- 2 slow close doors with interior adjustable shelves
- Chrome handles
- Mounting hardware included

OVERALL DIMENSIONS

610mm (W) x 203mm (D) x 711mm (H)
24" (W) x 8" (D) x 28" (H)

ITEM TO BE SPECIFIED

RUSTIC GREY FINISH

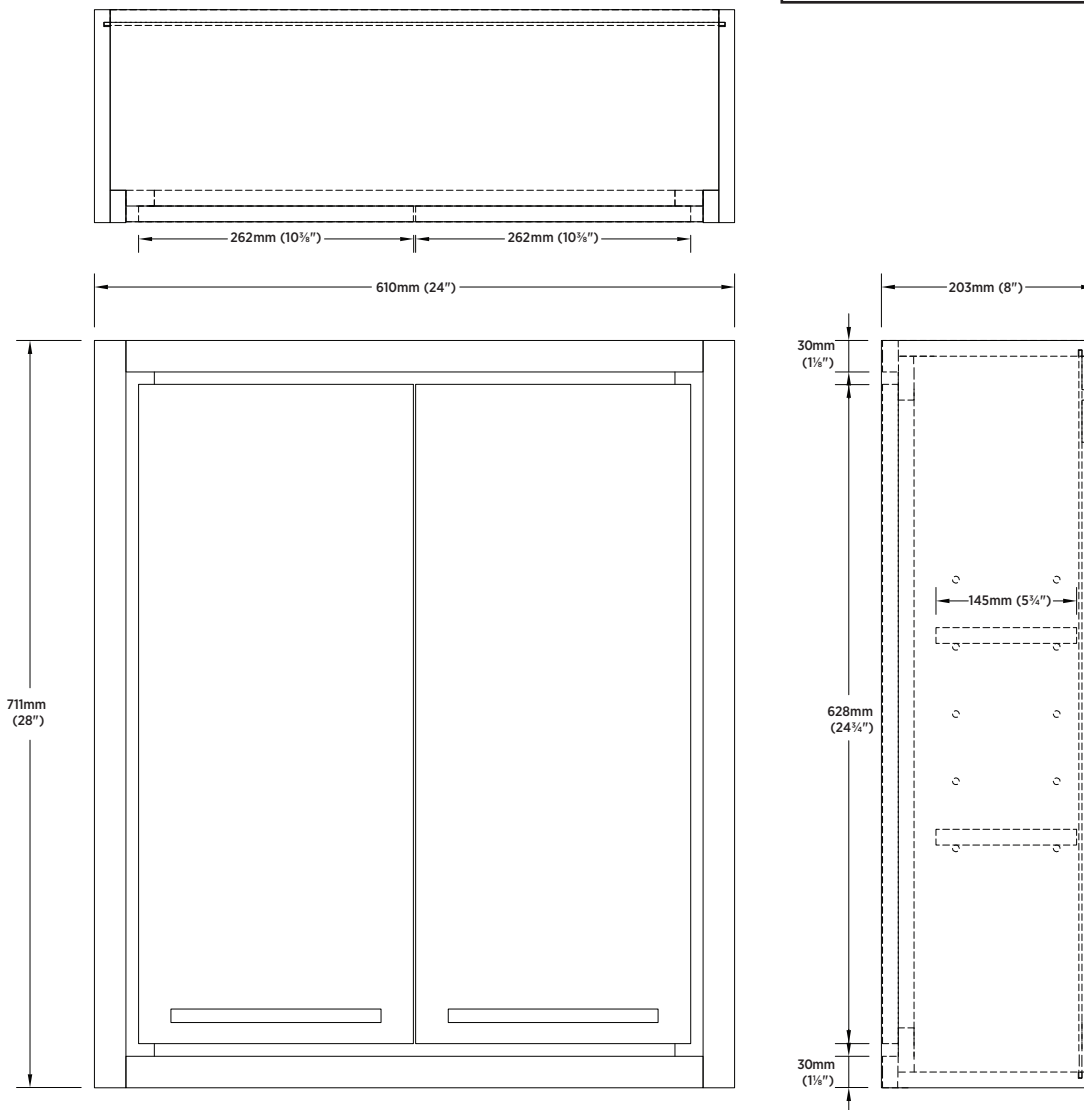
CLRGWC2428

UPC: 721015435112

SHIPPING

Cube 4.92

GW 41.47 lbs



NOTES:

Important: Dimensions of product are nominal and may vary within the range of tolerances allowed. These measurements are subject to change or cancellation. No responsibility is assumed for use of superseded or voided pages.