

SPECIFICATIONS :

- Painted white finish
- Optional Handles: Matte black and brushed nickel
- Carrara White Engineered stone top & undermount sink
- 4" Faucet drilling
- 2 slow close doors and 3 regular close drawers
- 1 interior adjustable shelf
- Price reflects pallet

OVERALL DIMENSIONS:

37" (W) x 19½" (D) x 34¾" (H)

940mm (W) x 495mm (D) x 884mm (H)

SHIPPING:

Cube 23.8
GW 186 lbs

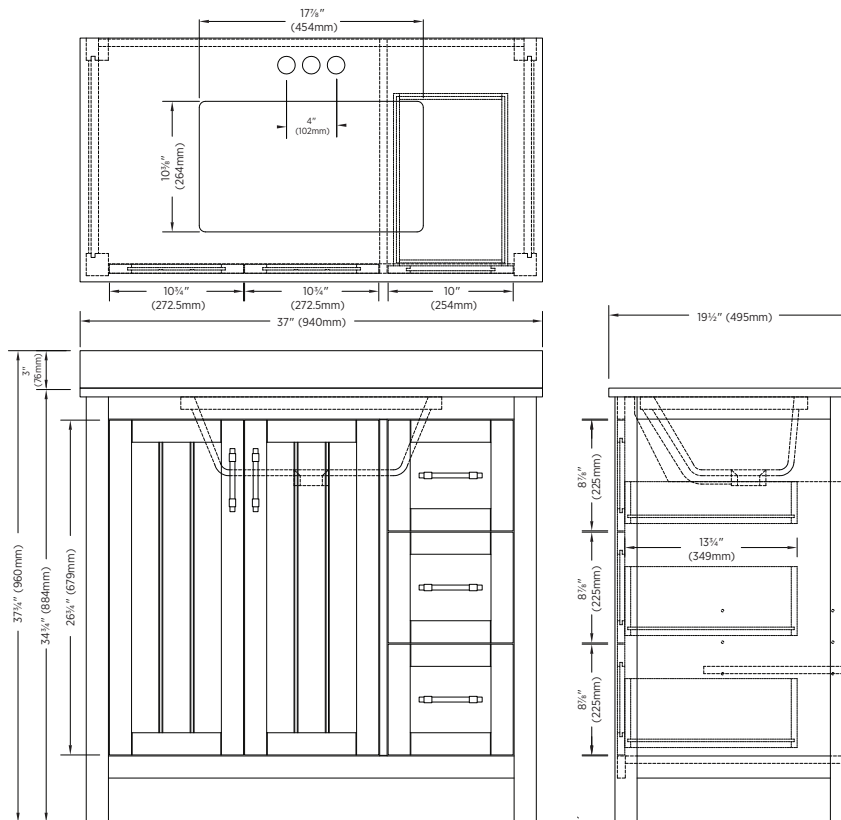


ITEM TO BE SPECIFIED:

WHITE:

CAWVT3719D

UPC: 721015438274



Notes:

Important: Dimensions of product are nominal and may vary within the range of tolerances allowed. These measurements are subject to change or cancellation. No responsibility is assumed for use of superseded or voided pages.